

LICK RUN WATERSHED

CLIENT

Metropolitan Sewer District of Greater Cincinnati (MSDGC)

LOCATION

Cincinnati, Ohio

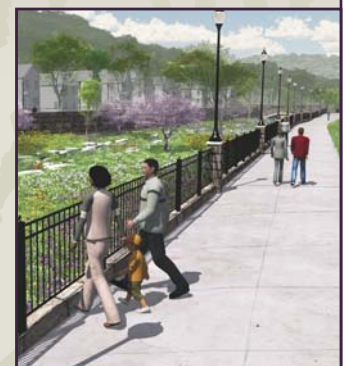
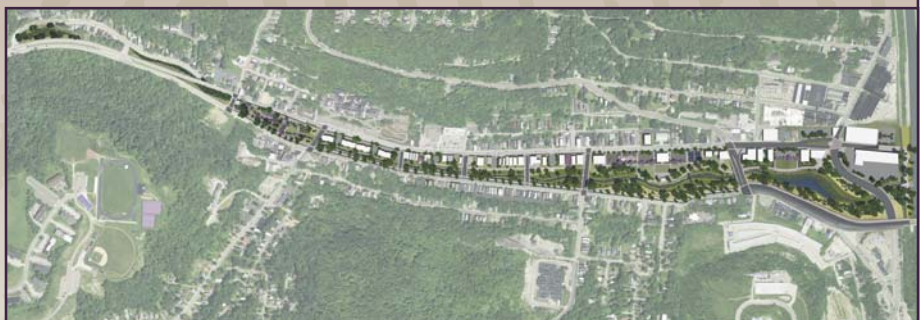
PROJECT PHASE

Planning & Design

DESCRIPTION

Human Nature collaborated with Strand Associates to identify comprehensive wet weather strategies for reducing one of MSDGC's largest-volumetric combined sewer overflows (CSOs) in the Lick Run Watershed. The recommended wet weather strategies focus on MSDGC's Communities of the Future program, which pairs the goals of CSO reduction with economic development, urban renewal, and long-term community sustainability. Central to this comprehensive wet weather strategy are restoring the historical Lick Run stream, constructing green infrastructure controls, and providing a catalyst for community redevelopment.

In January 2011 Human Nature assisted MSDGC with the first steps of community enrollment. Specifically, Human Nature designed and produced an integrated series of large-scale displays for the Lick Run Community Open House and facilitated interaction with residents.



HUMAN NATURE, INC.