

FORT THOMAS TOWNE CENTER PLAZA

CLIENT

City of Fort Thomas

LOCATION

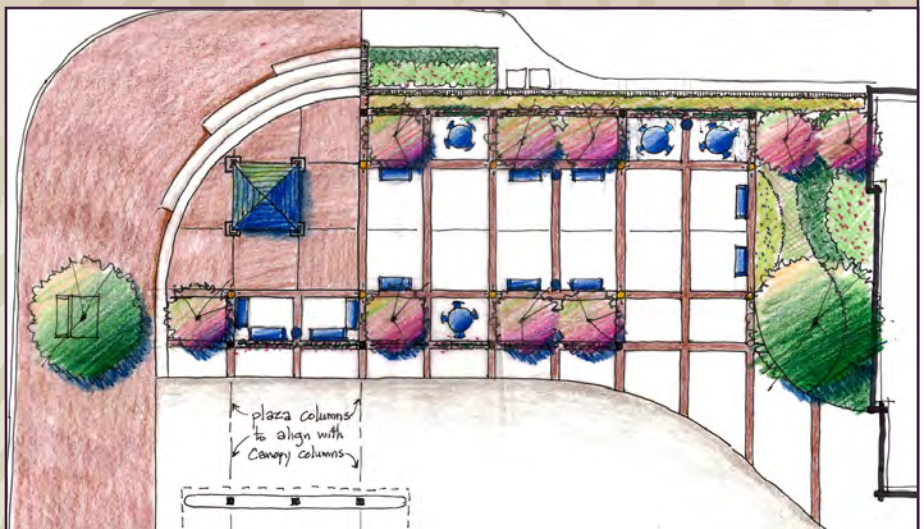
Fort Thomas, KY

PROJECT PHASE

Master Plan & Implementation

DESCRIPTION

Human Nature collaborated with Cardinal Engineering and KLH on the final design of a public plaza that serves as the focal point to the Central Business District and anchor to the revitalized Towne Center block. Human Nature was involved in the CBD master planning and the first two phases of streetscape work that led to the plaza concept being embraced as part of the vision for the district. The plaza is designed to accommodate day-to-day uses by residents as well as for civic events. The nature of the design and the amenities are intended to be compatible with the other streetscape phases and include benches, tables, trash receptacles, drinking fountain, decorative lighting, decorative paving and plantings. The architectural features and details are intended to relate to the new improvements planned for the Towne Center buildings, as well as the Masonic Lodge across the street.



HUMAN NATURE, INC.