

# FORT THOMAS GATEWAY PARKS

## CLIENT

City of Ft. Thomas

## LOCATION

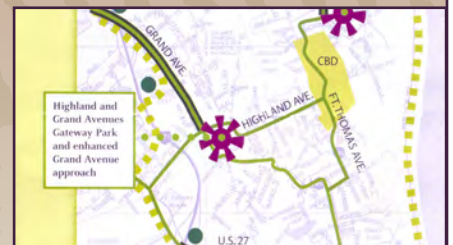
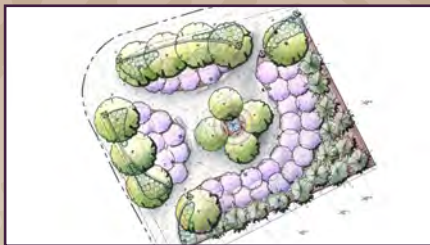
Ft. Thomas, Kentucky

## PROJECT PHASE

Conceptual Design,  
Implementation

## DESCRIPTION

Human Nature worked with the City of Fort Thomas, the local Garden Club, Green Team and private citizens on the development of a system of gateway parks defining the main entrances and corridors to the city. After determining key locations, gateway park concepts were developed and community participation sought. From concept to implementation, these parks give a sense of place for Fort Thomas as well as serve the community as public gathering spaces. Inverness Gateway Park, on the north end of the city, now serves as the adopted location for the city's Christmas Tree and beginning point for the annual Christmas Walk. The other major gateway park is at the intersection of Highland and Grand Avenues, in the center of the city. Both sites were formally gas stations that were eliminated for visual and environmental reasons.



HUMAN NATURE, INC.